

## Products Specification

SPECIFICATION		PREPARE	CHECK	APPROVE
MODEL:	USED IN:			
ISSUE DATE :	9/14/2023 5:51:00 PM			
COMMON/UNITE	DOC. NO:		REV.: 1.0	PAGE: 1 OF 1

### BG21- Fuel Gauge

Code	Spec	Data	Note
<b>Input feature</b>			
01	Input Voltage	V DC6~60V	Press the FN key, and then conduct a complete charge and discharge cycle for the battery. BG21 will save the learned battery information, and keep this battery parameter later.
02	Fit Battery type	7.2V~48V Li-ion 6.4V~48V LiFePo4 7.2V~48V Ni-Mh 7.2V~48V Ni-Cd 12V~48V Lead acid	
03	Max current	A 20A	
04	Rated current (24V battery)	m A Display on 20mA, Off 6mA	
05		A	

### Display and connection

Stan akumulatora: Ładowanie, Rozładowanie, Gotowość

**Front Display Labels:**

- Napięcie akumulatora (Battery Voltage)
- Pojemność akumulatora (Battery Capacity)
- Wskaźnik ekranu LED: czerwony stały: włączony; czerwony miga: wyłączony; nie świeci: brak zasilania
- FN: zapis testu akumulatora
- Wł./wyl. ekranu (Screen On/Off)
- Ikona pojemności (Capacity Icon)
- Poziom naładowania (Charge Level)
- Czas pracy (Working Time)
- Pojemność akumulatora (Battery Capacity)

**Back Panel Labels:**

- Podłączenie akumulatora - (Battery Connection)
- Wyjście - ładowanie, obciążenie (Output - Charging, Load)
- Złącze RS485 (opcjonalne) (Optional RS485 Connector)
- Zasilanie wskaźnika (Indicator Power)

06	Voltage accuracy	%	+ -1%	
07	Current accuracy	%	+ - 2%	
08	Capacity accuracy	%	+ -2%	Adopt coulomb integral measurement

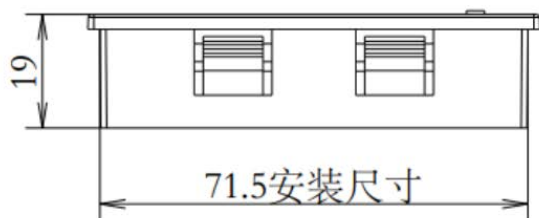
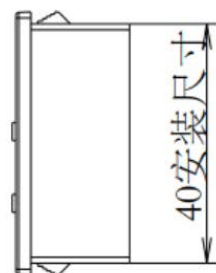
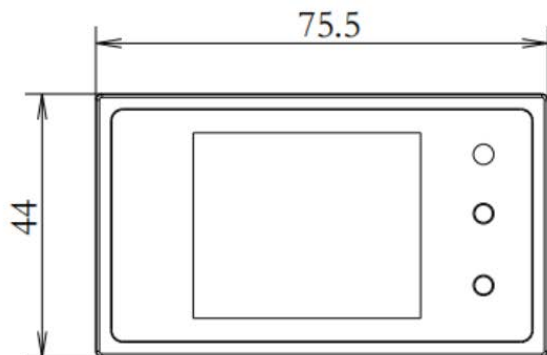
### Environmental conditions and shape parameters

09	Operating ambient temperature	℃	-10 ~ +50	
10	Working environment humidity	%	< +90	
11	Storage ambient temperature	℃	-40 ~ +70	
12	Storage environment humidity	%	0 ~ +95	
13	Anti-vibration level	-	5MM/50HZ/600S	
23	Product weight	g	50	
24	dimension	m	75X44X19 (LXWXH)	

# Products Specification

SPECIFICATION		PREPARE	CHECK	APPROVE
MODEL:	USED IN:			
ISSUE DATE :	9/14/2023 5:51:00 PM			
COMMON/UNITE	DOC. NO:		REV.: 1.0	PAGE: 2 OF 1

产品尺寸图



安装孔72x40.5mm

# SHENZHEN GREEN DIGITAL POWER TECH CO., LTD

Tel:86-755-86582701 Fax:86-755-27464649 Email:sales@green-charger.com Http://www.green-charger.com

## SPECIFICATION

PREPARE

CHECK

APPROVE

MODEL:

USED IN:

ISSUE DATE :

2024/3/12 11:09:24

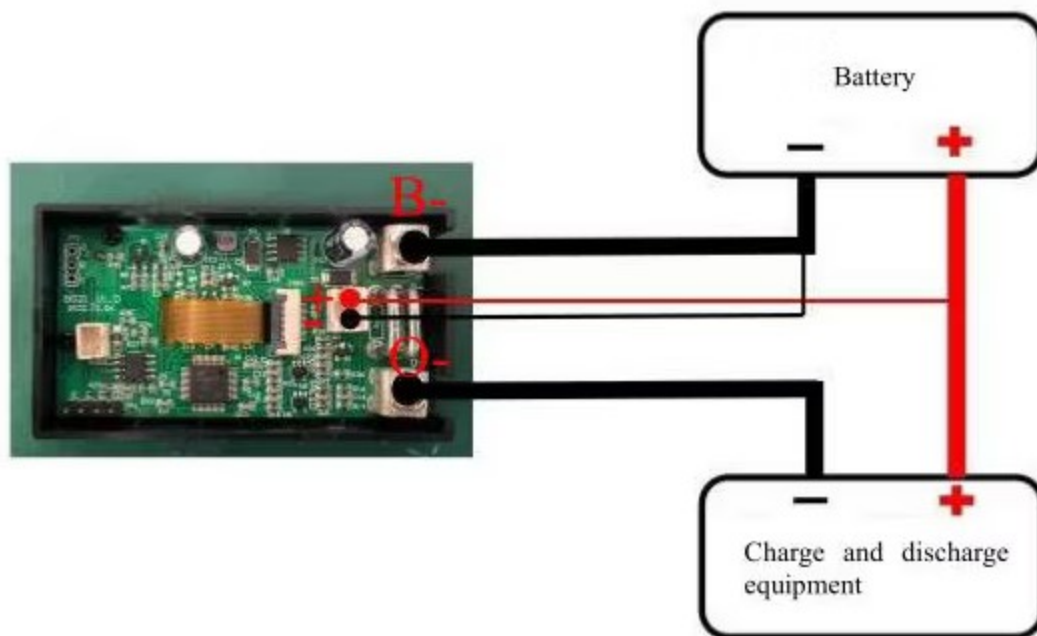
COMMON/UNITE

DOC. NO:

REV.: 1.0

PAGE: 3 OF 1

## 1.Wires connection diagram



## 2.Calibrate

After connecting the Wires, do not charge and discharge first, at this time, check whether the current display of the display screen is  $\leq 0.1A$ . If it is greater than or equal to  $0.1A$ , calibration is required.

The calibration procedure is as follows: long press the "ON" key and do not release. After about 3 seconds, the status indicator (red light) will blink. After the status indicator has blinked, click the "FN" key (do not press long) to complete the calibration.

## 3. Initial battery information

For the battery used for the first time, the user needs to connect the battery and the module, long press the FN button, and then do a complete charge and discharge cycle of the battery.

The specific procedure is as follows: Press and hold FN for about 2 seconds. If Test is displayed on the right of SOC, the battery information starts to be input. In this case, you only need to

To do a complete charge and discharge cycle of the battery, BG21 will save the learned battery information, and later use will call this battery parameter.

## 4. View the curve

During the charge and discharge process, you can click FN to view the charge and discharge curve, and then click FN to return to the main page.